

**ArtixScan DI 6250S**

**Sheetfed Document Scanner**

**Fast, Quiet, and Eco-friendly**



**2**  
CCD

**Ultrasonic  
Double-feed  
Detection**

**50 | 100**  
ppm | ipm  
Scanning Speed

**Duplex**  
Scanning

**100**  
Pages

**6000**  
Scans  
Daily Duty Cycle

**118"**  
Long Page

Programmable  
**6**  
Function Buttons

Additional  
**USB  
Hub**  
Ability

**Plastic  
Card**  
Scan

# ArtixScan DI-series

## ArtixScan DI 6250S

### Intuitive and Easy-to-access Scanner Buttons

The scanner is equipped with 3 physical buttons (Select, Scan/Stop, and Favorite) and a LED display at the top of the scanner, used to automate a number of predefined scan jobs, such as scanning to a file, sending images to your printer or e-mail accounts, and scanning for OCR. By just pressing a button, you can activate the function associated with it (F1, F2, F3, F4, F5, or Favorite) configured through the software, simplifying your operations and getting your scanning jobs done quickly.



### Rapid Scanning with Low-noise Design

The scanner has dual CCD color sensors and a 600 dpi optical resolution. It can produce 50 ppm / 100 ipm A4-sized scans at 200 dpi in color, grayscale, and black-and-white, delivering excellent document sharpness needed in all your scanning tasks. With its low-noise design, the scanner is able to provide a quiet and pleasant working environment, especially perfect for the most of high-volume workplaces.



### Superb Document Handling Capability

The scanner lets you scan a wide variety of documents, including standard-size papers, invoices, postcards, and various cards such as business cards, ID cards, and credit cards, improving your productivity and saving your money in requirements of additional accessories. Its high-volume tray, which can be fed with a stack of up to 100 sheets of papers or 2 pieces of cards at a time.

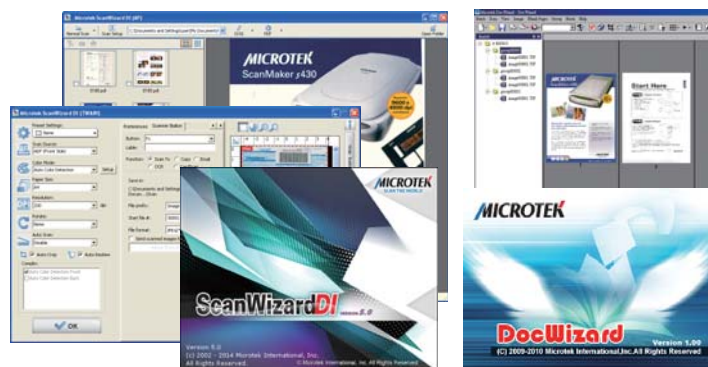
### Additional USB Hub Ability

The ArtixScan DI 6250S with embedded USB hub allows you to connect an external USB device such as Microtek's flatbed scanners, storage devices, and hard drives, using Universal Serial Bus technology to a single USB port.

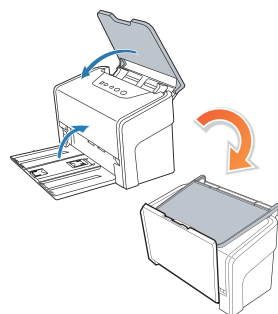


### Valuable Software Pack

ScanWizard DI is document scanning software exclusively designed by Microtek. Its brand-new UI and improved scanning, previewing, file naming and image processing functions, such as Auto-crop, Auto-deskew, Text Orientation, Remove Blank Page, Remove Punch Holes, Merge Images and Barcode Separator, let users start in hands immediately. Microtek's DocWizard, one scanning management software, is specifically designed for document scanners, with scanning, image processing, and file or book managing functions in straightforward operations to meet all professional digitizing needs.



### Foldable Trays Perfect for Tight Spaces



The ArtixScan DI 6250S is not only with an elegant appearance, it is also bearable and durable. Furthermore, its foldable trays brings you a lot of convenience when using it in a limit space, and it also makes storing and handling more easier when the scanner is not in use.

## Specifications

### Scanner Type

Desktop sheetfed color scanner

### Image Sensor

CCD (x 2)

### Light Source

LED

### Color Modes

24-bit color, 8-bit grayscale, 1-bit b&w ( external )

### Interface

Hi-Speed USB 2.0

### Resolution

600 dpi

### Feeder Capacity

100 sheets

### Scanning Area

Max : 8.5" x 118" ( 216 mm x 3000 mm )  
Min : 1" x 1" ( 25.4 mm x 25.4 mm )

### Scanning Speed

50 ppm (Simplex) / 100 ipm (Duplex), at 200 dpi, A4/color, grayscale, line art

### Paper Weight

8 to 32 lbs ( 30.08 to 120.32 g/m<sup>2</sup> )

### Paper Size

Max: 8.85" x 118" ( 225 mm x 3000 mm )  
Min: 2.75" x 3.149" ( 70 mm x 80 mm )

### Duty Cycle

6,000 pages per day

### Separation Roller Life

150,000 scans

### Feed Roller Life

100,000 scans

### Software Driver

TWAIN

### Dimensions ( L x W x H )

7.08" x 12.60" x 7.87"  
( 180 mm x 320 mm x 200 mm )

### Weight

9.26 lbs. ( 4.2 kg. )

### Environment

Operating temperature:  
41° to 104°F ( 5° to 40°C )  
Relative humidity: 10% to 85%

## System Requirements

- CD/DVD-ROM drive (for installing software)
- Color display with 24-bit output capability
- 1 GB RAM or more (2 GB is recommended)
- Intel Core2 Duo Processor at 2.1 GHz or above PC with a SATA2/SATA3 at 7200 rpm HDD or SSD (recommended); Intel-Based Mac computer
- Windows XP / 7 / 8 / 10 ; Mac OS X 10.6 or later

## Included Software

- Microtek® ScanWizard™ DI (PC)
- Microtek® DocWizard (PC)
- Microtek® ScanPotter (MAC)
- ABBYY FineReader® Sprint OCR (PC/Mac)
- ABBYY Business Card Router (PC)
- InterVideo MediaOne Gallery™ (PC)
- Adobe® Acrobat® Reader (PC/Mac)

For more details on product, please contact your local Microtek sales or dealers.

MICROTEK INTERNATIONAL, INC.

No. 6 Industry East Road 3, Science-Based Industrial Park, Hsinchu 30075, Taiwan  
Tel: +886-3-577-2155 Fax: +886-3-577-2598 <http://www.microtek.com>

© 2019 Microtek. Microtek, ScanMaker, ArtixScan and ScanWizard are trademarks or registered trademarks of Microtek International, Inc. All other brands, product names and logos herein are trademarks or registered trademarks of their respective holders. Specifications, software bundles and accessories are subject to change without notice. Delivery of technical support services subject to change without notice. Not responsible for typographical errors. © 2012 Shutterstock Publishing. 20191031

**MICROTEK**  
SCAN THE WORLD