

# LS-2100

## A2 Large-scale Flatbed Digitizer

- Design of an opened flatbed is perfect for placing various types of objects
- A2 scanning area is up to 630 x 430 mm
- High-resolution and color linear CCD generates superior image quality
- Optical resolution is up to 1000 dpi
- Warm-up-free LED
- Use of one CCD eliminates misaligned effects caused by splitting images
- Easy-to-use and install high-speed USB interface
- Optional trolley for convenient movement and stationary
- Exclusively designed image-capturing software



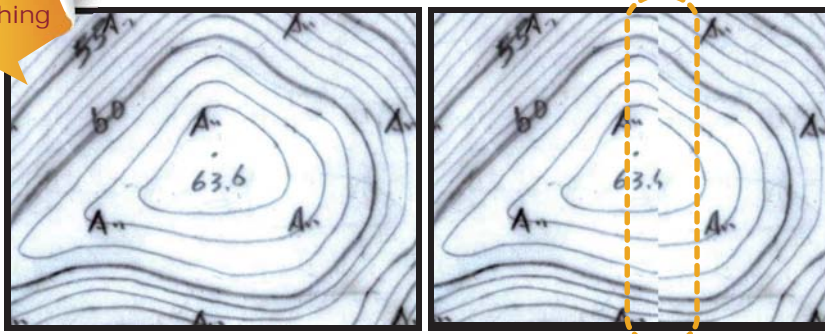
# LS-2100

The LS-2100 is a digitizer exclusively designed by Microtek for scanning large-scale materials. It is provided with an A2 scanning area up to 630 x 430 mm, high-resolution and color linear CCD, 1000-dpi resolution and 48-bit color depth. With the support of the LS-2100, it is easy and convenient to digitize large-scale images with superior color and quality. The LS-2100 is perfect for wide use in fields of technical drawings, art works and aged papers.

Design of One  
A2 CCD  
Requires  
No  
Stitching

## The Design of One CCD Eliminates Misaligned Effects Caused by Splitting Images

The LS-2100 is adopted with optical elements in high specifications. It is able to capture a full size of A2 image by using one lens, which eliminates misaligned effects caused by splitting images generated from two lenses.



▲ Use of one CCD camera requires no stitching when scanning images

▲ Two CCDs easily cause misaligned effects when scanning images

## Design of an Opened Flatbed

With an opened flatbed design, it is easy to place or arrange the position of objects when scanning with the LS-2100. It is perfect for wide use in dealing with heavy papers, bundled books, damaged and fragile materials, various building materials, tiles and wall pictures.



## Optional

## Convenient Trolley for Easy Movement and Stationary

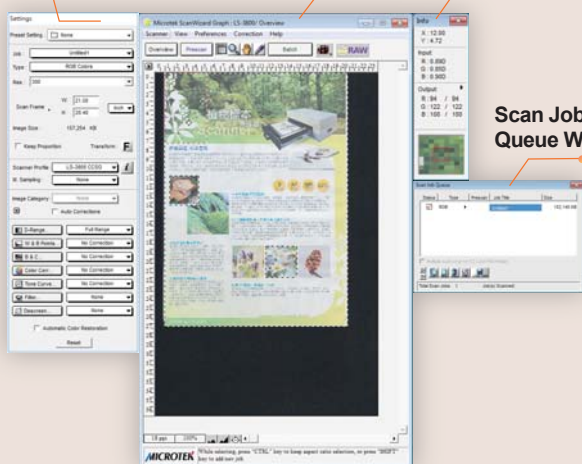
Used together with an optional trolley, LS-2100 can be stored stably at an easy-to-operate height. With casters attached at the bottom of the trolley, users can move the scanner conveniently.

## Settings Window

## Preview Window

## Info Window

## Scan Job Queue Window



## Exclusive Scanning Software for Large-scale Objects

## Multi-functional and Easy-to-use Software

The software is designed and developed exclusively for scanning large-scale floor plans. With professional and multi-functional image correction tools, it is great for use in categories of the advertising, the printing, creativity design, library and information services, the image archiving and the construction.

- Supports the Windows 10
- Supports scanning of image files in color, grayscale and B&W
- Frames a selective area to scan and then to save as a file
- Supports image functions such as Rotate, Flip, Auto-Crop and Auto-Deskew
- Supports output image files in TIFF, BMP, JPEG, JPEG2000 and PDF formats
- Imports predefined ICC profiles to ensure color accuracy
- Provides with various image correction tools
  - Brightness / Contrast adjustment
  - Gradation Curve / Tone Curve / Saturation adjustment
  - Selective Color Tool
  - Filter Effects (Blur, Sharpen, Emboss and so on)

## Specifications

|                    |                                      |                    |  |
|--------------------|--------------------------------------|--------------------|--|
| Scanner Type       | Flated                               | Interface          | Hi-Speed USB (USB 2.0)   |
| Image Sensor       | Color Linear CCD                     | Dimensions (LxWxH) | 862 x 630 x 382 mm (w/o trolley)<br>862 x 630 x 760 mm (w/ trolley)          |
| Optical Resolution | 1000 dpi                             | Weight             | Approx. 47 kg (w/o trolley)  |
| Color Depth        | 48-bit                               | Voltage            | AC 100V-240V, 47-63 Hz · Max. 1.5A (Input)                                   |
| Color Mode         | Color / grayscale / B&W              | Environment        | Operating temperature: 50°-104°F (10°-40°C)<br>Relative humidity: 20%-85% RH |
| Scanning Area      | 630 mm x 430 mm (24.8" x 16.9")      |                    |  |
| File Output Format | TIFF, BMP, JPEG, JPEG2000, PDF, etc. |                    |  |

## System Requirements

- CD-ROM drive (for installing software)
- Color display with 24-bit color output capability
- 8 GB RAM or more
- Intel Core i5 Processor at 3.0 GHz PC or higher
- with USB 2.0 port
- Windows 10 (64-bit)

\* For more details on product, please contact your local Microtek sales or dealers.

## MICROTEK INTERNATIONAL, INC.

No.6, Industry East Road 3, Hsinchu Science Park, Hsinchu 30075, Taiwan  
Tel: +886-3-577-2155 Fax: +886-3-577-2598 www.microtek.com

**MICROTEK**  
SCAN THE WORLD

