



A Total Solution For Specimen Digitization and Archive Management

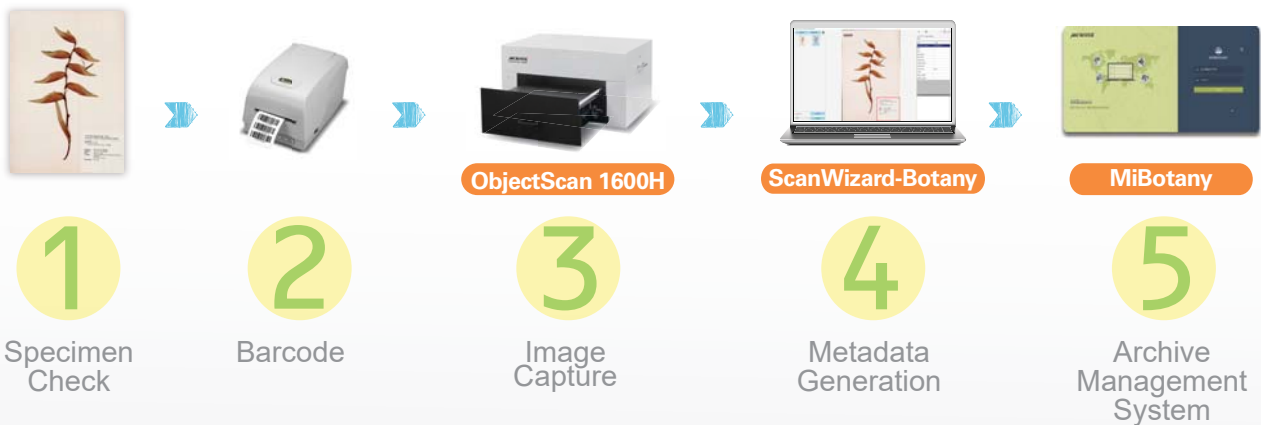


ObjectScan 1600H

- On-top scan design that specimens with a height of up to 70mm.
- 1200dpi color CCD provides high-resolution image
- Adjustable scan beds are convenient for objects beyond focus
- Up to +/- 6 mm DOF can get clear extended DOF images
- Automated metadata recognition ability
- Image archive and privileged account management system
- Maximum scanning range supports up to 500x353mm.



The best tool for specimen digitization and image management



Over 40 clients worldwide choose our solution



ObjectScan 1600H

On-top scan design protects fragile plant specimen

ObjectScan 1600H is characterized as an on-top scan model. This unique mechanistic design guarantees the specimen morphological integration during image capture, eliminating irreversible risks from conventional up-side-down scan or vertically moving scanning station.

1200 dpi color CCD provides high-resolution image

ObjectScan 1600H has a color linear CCD with resolution up to 1200 pixels per inch. With the built-in 48-bit ADC (Analog to Digital Converter), the whole specimen as well as details of surface textures can be precisely captured and presented in high fidelity format.



Up to +/- 6 mm DOF can get clear extended DOF images

The DOF (Depth of Field) of ObjectScan 1600H is up to +/- 6mm at 300 dpi. This is particularly suitable for specimens with raised or protruding areas, preserving the original appearance of specimens for academic research.



ObjectScan 1600H Images

Automated metadata recognition ability

Specimen label information will be recognized and automatically saved titled by herbarium code and specimen serial number in XML format through ScanWizard-Botany. Various options, such as contrast, lightness, and sharpness, are also provided for curators on image adjustment.

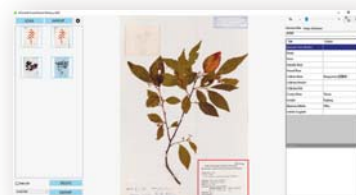


Image archive and privileged account management system

MiBotany is both a web-server system and specimen image authentication database, aiming for being an efficient and integrated multi-functional platform. After hierarchical login-based image quality and metadata profile validation from invited professionals, MiBotany can quickly update the system and immediately make verified specimen access by the public.



Specifications

Type	On-top scan flatbed scanner	Output File Format	TIFF, JPEG, BMP, PDF
Image Sensor	Color Linear CCD	Interface	Hi-speed USB (USB 2.0)
Resolution	1,200 dpi	Operating Systems	Windows 10 / 11
Depth of Field	+/- 12 mm @ 150 dpi +/- 6 mm @ 300 dpi	Dimensions (LxWxH)	920 mm x 570 mm x 520 mm (foot stands excluded)
Light Source	LED	Net Weight	67 kg (147.7 lbs)
Depth of Color	48-bit (Input) / 24-bit (Output)	Voltage	AC 100V-220V
Scanning Mode	24-bit Color / 8-bit Grayscale	Environment	Operating temperature: 10° to 40°C Relative humidity: 20% to 85% RH
Scanning Area	500 mm x 353mm (19.7" x 13.9")		
Scanning Speed	35 sec @ 300 dpi, Full Frame (without calibration)		

System Requirements

- CD-ROM/DVD-ROM drive (for installing software)
- Color display with 24-bit color output capability
- 8 GB RAM or more
- Intel Core i5 Processor at 3.0 GHz PC or higher with Hi-speed USB (USB 2.0) port
- Windows 10 / 11

* For more details on product, please contact your local Microtek sales or dealers.

MICROTEK INTERNATIONAL, INC.

No.6, Industry East Road 3, Hsinchu Science Park, Hsinchu 30075, Taiwan
Tel: +886-3-577-2155 Fax: +886-3-577-2598 www.microtek.com

MICROTEK
SCAN THE WORLD