

# High Stability Gel Documentation

For digitizing electrophoresis gel or qualitative / quantitative analysis and rapid screening detection

## Bio-5050



Large format design for analysing large electrophoresis gels or high-throughput screening test

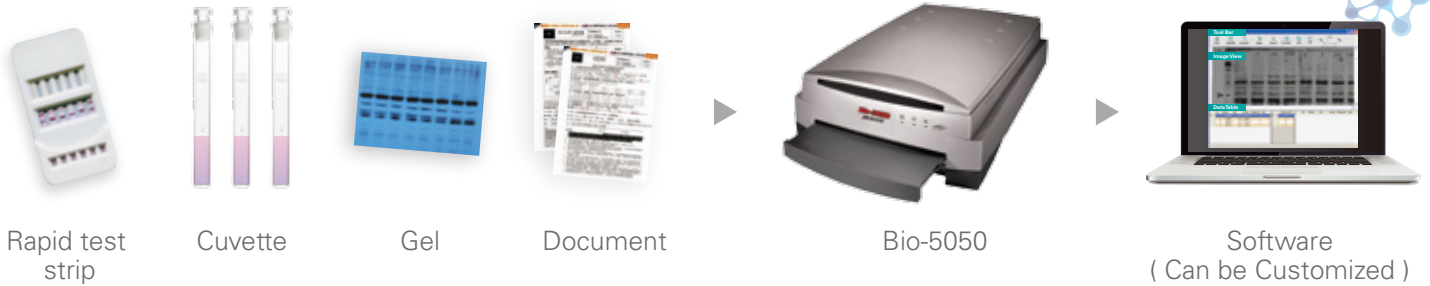
High stability (CV<1%), suitable for quantitative analysis

2400 dpi resolution for fine microbial images

Easy to customize as analytical instruments

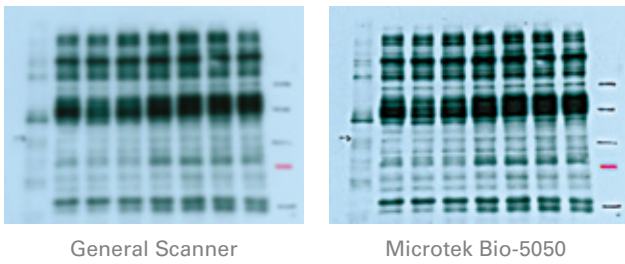


# Bio-5050 Application Scenario



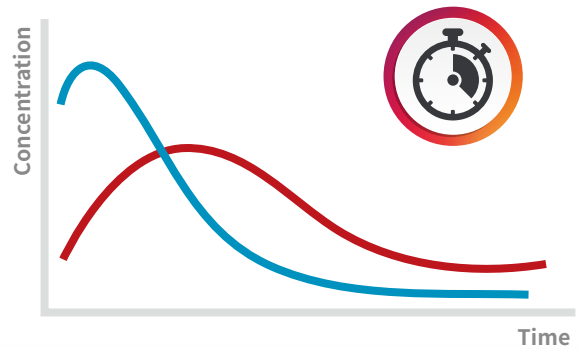
## High accuracy & Stability performance

With 48 bit color depth, 2400 dpi resolution, 0.0D ~ 3.4D absorbance range capacity, plus high-quality and stable performance with a CV value of 0.5%, it can accurately and stably capture electrophoretic gel, rapid test strip and film images. It is the best choice for digitization a biological laboratory electrophoretic gel related image.



## Periodic auto-scan (Time-Lapse)

With high-stability performance and a customized periodic auto-scan function, Bio-5050 can record the variation of the tested images for further analysis. It is a better cost-effective solution for ELISA-related experiment.

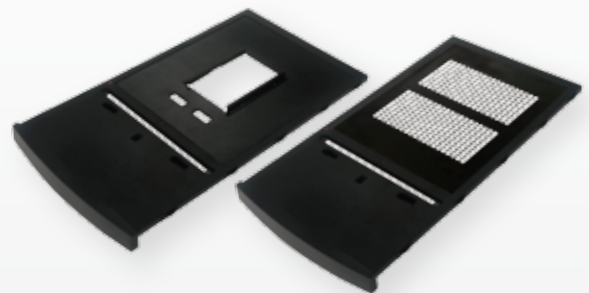


## Multi-function Gel documentation equipment

With the twin-bed design, Bio-5050 can scan electrophoresis gels, films, rapid test strip and documents to improve the efficiency of laboratory imaging operations. The built-in autofocus design ensures flexible and high-precision image capture equipment.

## Leak-Proof & Customized Template

25x20cm large leak-proof tray is designed to carry electrophoresis gel, film and transparent samples. The leak-proof design avoids damage to the scanner. The flexible design is easy to customize a template to use for different test samples.



## Specifications

Scanner Type	Flatbed scanner
Scanning Mode	Transmissive & Reflective mode
Sensor Type	Color CCD
Resolution	2400 dpi
Bit Depth	48 bit
Light Source	LED
Absorbance Range	0.0D ~ 3.4D
Interface	USB 2.0
Scanning Area	Reflective : max. 8.5" x 14" ( 216 mm x 356 mm ) Transmissive : max. 8" x 10" ( 203 mm x 254 mm )

CV	0.5% @ 1.0D · 1% @ 2.0D
Range(R)	1% @ 1D · 2% @ 1.5D
Scan Speed	60 sec @300 dpi
Warm up Time	10 min
Dimensions	22.3" x 15.1" x 6.3" ( 567 mm x 385 mm x 158 mm )
Net Weight	26.4 lbs. (12 kg.)
Power Supply	AC 100~240V · 50~60Hz

## System Requirement

PC with Windows 10 / 11

\* For more details on product, please contact your local Microtek sales or dealers.

## Microtek International, Inc.

No.6, Industry East Road 3, Hsinchu Science Park, Hsinchu 30075, Taiwan  
Tel: +886-3-577-2155 Ext:360 Fax: +886-3-577-2598 www.microtek.com

© 2022 Microtek. Microtek, ScanWizard, ArtixScan, and MiBio are trademarks or registered trademarks of Microtek International, Inc. All other brands, product names and logos herein are trademarks or registered trademarks of their respective holders. © 2022 123RF Publishing. 20230131

**MICROTEK**  
SCAN THE WORLD